



Ronald McDonald House Charities of Madison

Keeping Families Close



Located near American Family Children's Hospital

Madison's Ronald McDonald House provides families with a "home away from home" and the support they need while their child receives medical treatment.

The Ronald McDonald House is conveniently located near American Family Children's Hospital and has 31 private guest rooms, each with its own bathroom. Guest rooms can accommodate two to six people, and some have ADA-compliant bathrooms. Guests also have access to shared spaces, including two kitchens and indoor and outdoor recreation areas.

Our volunteers and staff provide support so that families can concentrate on what is most important - helping their children heal.



Kitchen

Complimentary amenities

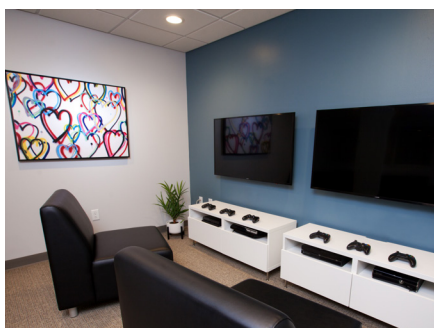
- Home-cooked dinners
- On-site laundry facilities
- Stocked pantry
- Shuttle/taxi service is available by appointment at the front desk
- Televisions are available in some common areas and in each guest room
- Video games are available for in-house use in the Game Room
- Wi-Fi access and guest computers
- Underground parking
- Exercise equipment and free weights are available in the Exercise Room
- Hohl-Wuest Hope Park is a private park with a play set, a track for tricycles, plenty of grass, seating, tables, and a basketball court



Bedroom

Who can stay

- Families (including siblings) with a child 18 years old or younger receiving medical care.
- Parent/guardian must be 18 years or older or accompanied by the person legally responsible for the minor parent/guardian.
- Families must live at least 35 miles away from the Ronald McDonald House in Madison.



Game Room

How to stay

To set up a referral, please call (608) 263-0315 or stop by the Guest Depot, located on the first floor of American Family Children's Hospital. Once referred, families are put on our list of anticipated arrivals. Given the unknown stay length of many guests, we cannot guarantee that a room will be available until the day of check-in.



Play Room



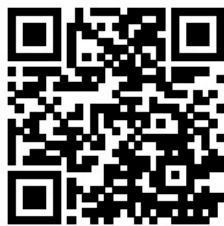
Laundry Room



Art Room



Sun Room



Scan the QR code above with a camera phone to learn more.

Day of arrival

On the morning of arrival, families should call (608) 232-4660 to confirm the availability of their room. The preferred check-in time is between 3 pm and 8 pm; however, early or late check-in may be available.

What does it cost

We do not charge for our services. We suggest a \$10 per night donation, but any amount is appreciated. No family will ever be turned away for the inability to contribute.

Front office hours

Monday - Friday, 8 am - 9 pm

Saturday - Sunday, 9 am - 9 pm

Staff is available during the hours listed above.

Once checked in, families can come and go anytime.

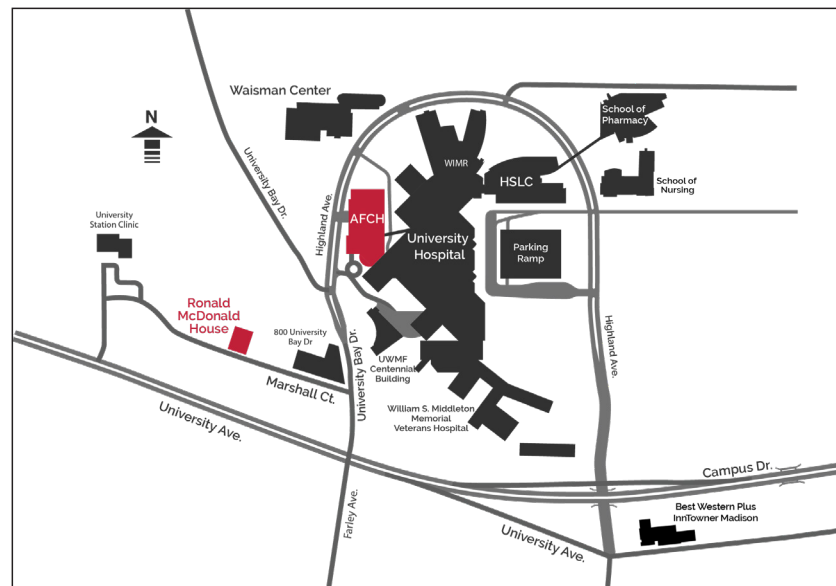
Contact information

RMHC-Madison

2716 Marshall Court, Madison, WI 53705

(608) 232-4660

www.rmhcmadison.org



To set up a referral, please call (608) 263-0315 or stop by the Guest Depot, located on the first floor of American Family Children's Hospital.

UWHealthKids

American Family
Children's Hospital